

Q
S
M
T

CUSTOM PAK FEATURES

HARDWARE

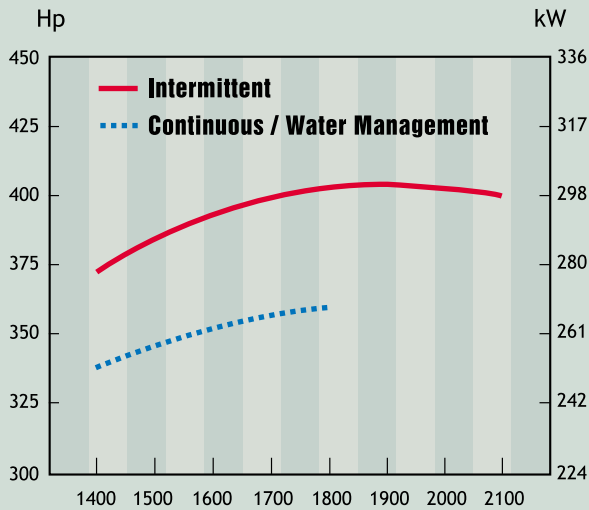
- Heavy duty cooling package
 - 50°C ambient capability
 - Air-to-air charge air cooling with bolted top and bottom stainless steel tanks
 - Sucker fan
 - Integrated fuel cooler
 - Bolted top and bottom radiator tanks
 - Long life coolant
- Heavy section base frame with option of extended rails for pump mounting
- Heavy duty 2-stage air cleaner with safety element
- Integral residential-class horizontal exhaust silencer with rain cap
- Mounted instrument panel (also remote mountable)
- Total package fully warranted

ELECTRONIC

- Programmable ratings
- Engine protection
- Multi-unit synchronisation
- Low idle speed adjust
- 4-step switched throttle
- Low idle shutdown
- Electronic instrumentation
- Duty cycle monitor
- Water in fuel warning
- Maintenance monitor
- OEM switched input
- Engine hour meter
- 24 Volt electrics
- Run timer (optional)
- Loss of prime protection (optional)

QSM11

TECHNICAL SPECIFICATIONS



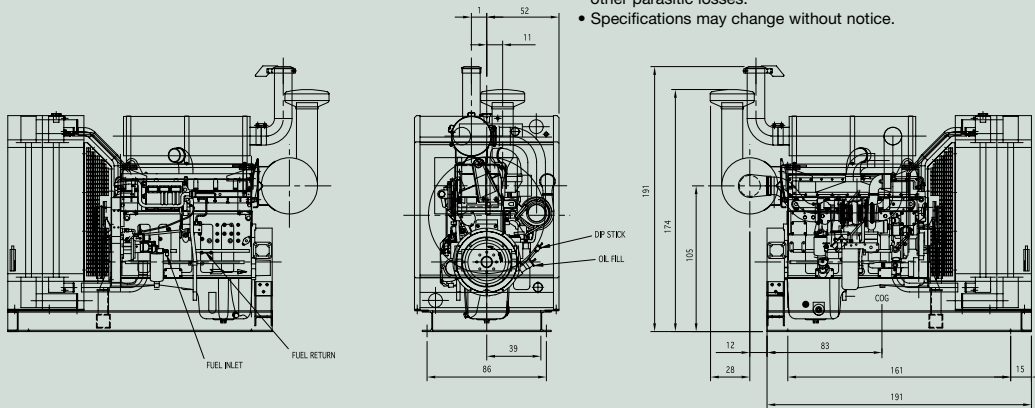
SPECIFICATIONS

Six Cylinder, Full Authority Electronic, In-Line Diesel Engine, Four-Stroke Cycle, Turbocharged.

	US STD	Metric
Power Rating	400 Hp	298 kW
Rated Speed	2100 RPM	2100 RPM
Peak Torque	1400 lb-ft	1898 Nm
Peak Torque RPM	1400 RPM	1400 RPM
Bore & Stroke	4.92 x 5.79 ins	125 x 147 mm
Piston Displacement	660 cu-ins	10.8 L
Oil System Capacity	40 US qts	37 L
Coolant Capacity	40 US qts	37 L
Flywheel Housing	SAE 1	SAE 1
Flywheel	SAE 1 (18" adaption)	
Wet Weight (Eng.)	2170 lbs	984 kg
Custom Pak Weight (Wet)	3410 lbs	1550 kg

CPL 2829

- Performance figures shown are SAE and do NOT include Cooling Fan and other parasitic losses.
- Specifications may change without notice.



PERFORMANCE

RPM	Intermittent Power		Continuous / Water Management Power		Intermittent Torque		Fuel Consumption			
	HP	kW	HP	kW	lb-ft	N.m	lb/Hp-hr	g/kW-hr	lb/Hp-hr	g/kW-hr
1400	373	278	336	251	1400	1898	0.326	198	0.330	201
1500	384	286	345	257	1343	1821	0.323	196	0.323	196
1600	391	292	352	262	1286	1744	0.324	197	0.323	196
1700	398	297	357	266	1229	1666	0.325	198	0.324	197
1800	402	300	360	268	1172	1589	0.326	198	0.325	198
1900	403	301	-	-	1115	1511	0.328	200	-	-
2000	403	301	-	-	1057	1433	0.330	201	-	-
2100	400	298	-	-	1000	1356	0.333	203	-	-

BRANCHES: AUSTRALIA: NSW: Grafton Ph: (02) 6642 3655 Leeton Ph: (02) 6953 3077 Newcastle Ph: (02) 4964 8466 Penrith Ph: (02) 4729 1313 Queanbeyan Ph: (02) 6297 3433 Scone Ph: (02) 6545 2349 Tamworth Ph: (02) 6765 5455 Wetherill Park Ph: (02) 9616 5300
VIC: Campbellfield Ph: (03) 9357 9200 Dandenong Ph: (03) 9706 8088 Laverton Ph: (03) 9360 0800 Swan Hill Ph: (03) 5033 1511 Wodonga Ph: (02) 6024 3655
QLD: Cairns Cummins Nerco Ph: (07) 4035 2999 Darra Ph: (07) 3375 3277 Emerald Ph: (07) 4982 4022 Mackay Ph: (07) 4955 1222 Townsville Ph: (07) 4774 7733
SA: Adelaide Ph: (08) 8262 5211 Mount Gambier Ph: (08) 8725 6422
WA: Bunbury Ph: (08) 9725 6777 Kalgoorlie Ph: (08) 9021 2588 Karratha Ph: (08) 9144 4646 Perth Ph: (08) 9475 8777
NT: Darwin Ph: (08) 8947 0766
TAS: Devonport Ph: (03) 6424 8800
PAPUA NEW GUINEA: Lae Ph: 675 472 3699 Port Moresby Ph: 675 323 2471
NEW ZEALAND: Auckland Ph: (09) 579 0085 Christchurch Ph: (03) 348 8170 Dunedin Ph: (03) 477 8818 Palmerston North Ph: (06) 356 2209 Bay of Plenty Ph: (07) 345 6699
 Website: www.cumminsengine.com.au

BULLETIN CPR 501
STDOU 2636 - 02/01

