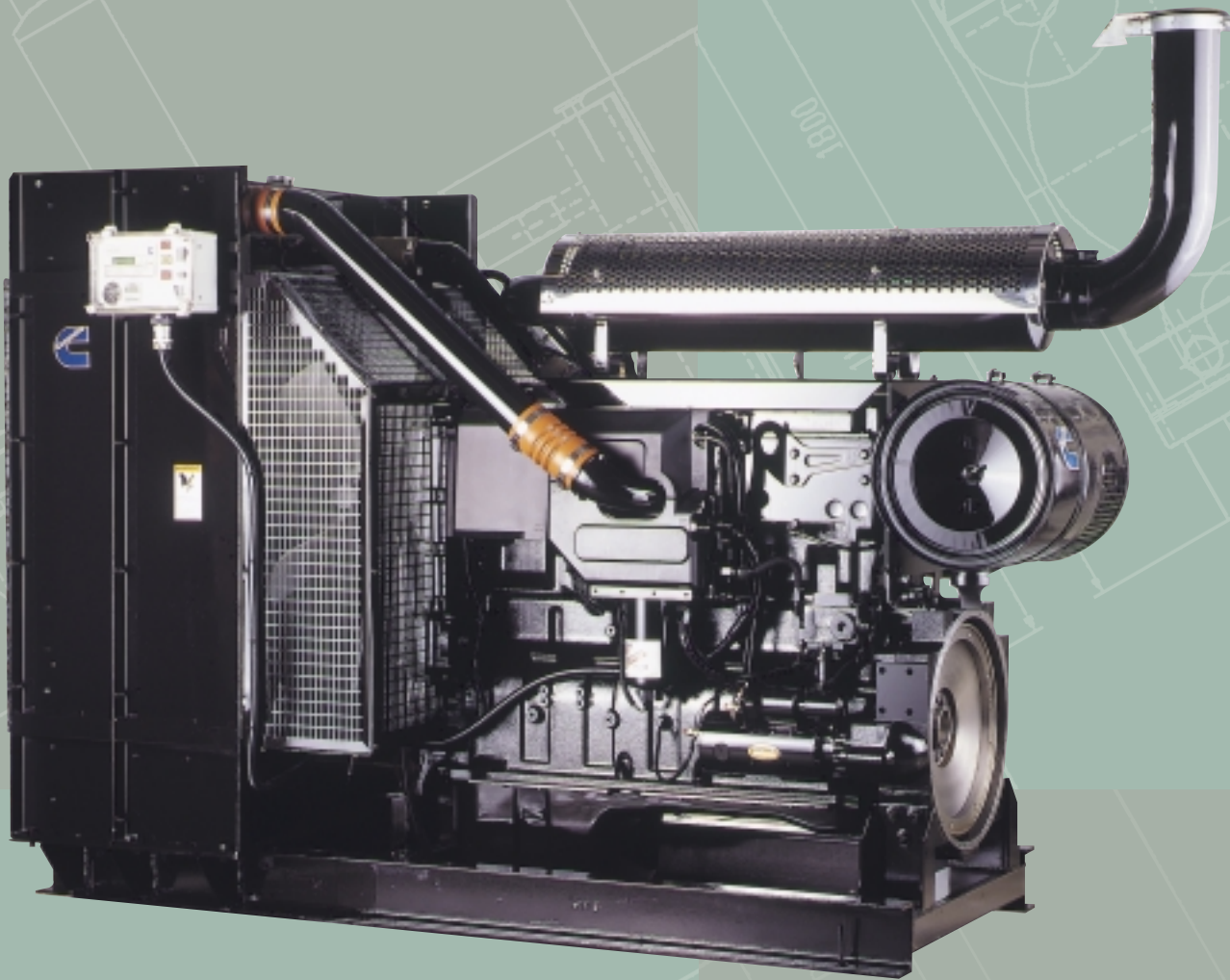




QSS15



CUSTOM PAK FEATURES

HARDWARE

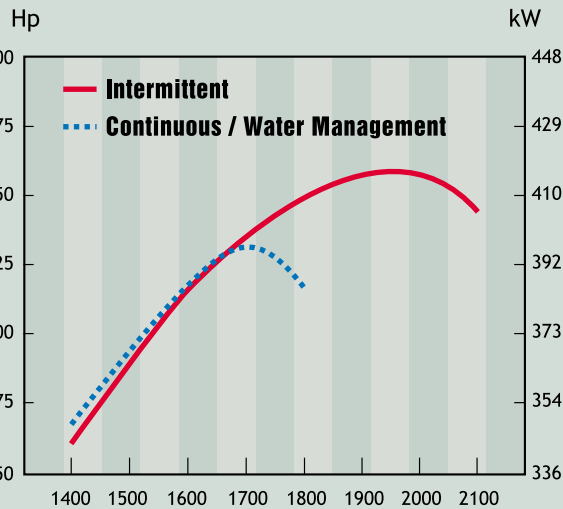
- Heavy duty cooling package
 - 50°C ambient capability
 - Air-to-air charge air cooling with bolted top and bottom stainless steel tanks
 - Sucker fan
 - Integrated fuel cooler
 - Bolted top and bottom radiator tanks
 - Long life coolant
- Heavy section base frame with option of extended rails for pump mounting
- Heavy duty 2-stage air cleaner with safety element
- Integral residential-class horizontal exhaust silencer with rain cap
- Mounted instrument panel (also remote mountable)
- Total package fully warranted

ELECTRONIC

- Programmable ratings
- Engine protection
- Multi-unit synchronisation
- Low idle speed adjust
- 4-step switched throttle
- Low idle shutdown
- Electronic instrumentation
- Duty cycle monitor
- Water in fuel warning
- Maintenance monitor
- OEM switched input
- Engine hour meter
- 24 Volt electrics
- Run timer (optional)
- Loss of prime protection (optional)

QSX15

TECHNICAL SPECIFICATIONS



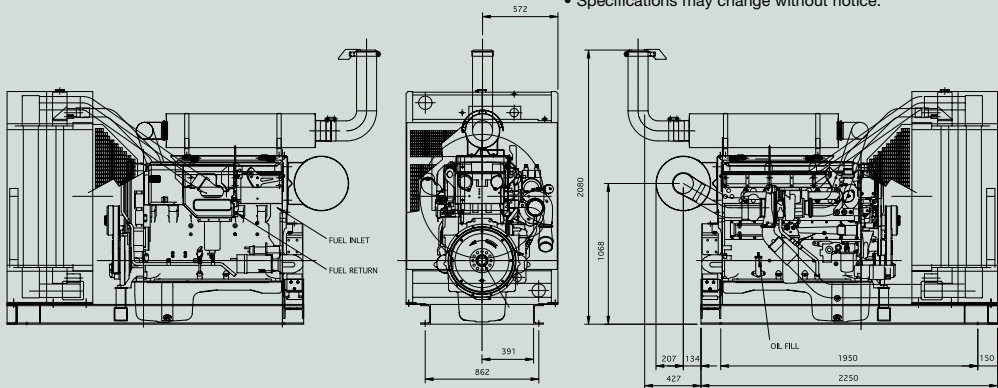
SPECIFICATIONS

Six Cylinder, Full Authority Electronic, In-Line Diesel Engine, Four-Stroke Cycle, Turbocharged

	US STD	Metric
Power Rating	540 Hp	403 kW
Rated Speed	2100 RPM	2100 RPM
Peak Torque	1730 lb-ft	2346 Nm
Peak Torque RPM	1400 RPM	1400 RPM
Bore & Stroke	5.39 x 6.70ins	137 x 170 mm
Piston Displacement	915 cu-ins	15 L
Oil System Capacity	56 US qts	53 L
Coolant Capacity	76 US qts	72 L
Flywheel Housing	SAE 1	SAE 1
Flywheel	SAE 1 (18" adaption)	
Wet Weight (Eng.)	3512 lbs	1593 kg
Custom Pak Weight (Wet)	4145 lbs	1880 kg

CPL 2825

- Performance figures shown are SAE and do NOT include Cooling Fan and other parasitic losses.
- Specifications may change without notice.



PERFORMANCE

RPM	Intermittent Power		Continuous / Water Management Power		Intermittent Torque		Fuel Consumption			
	HP	kW	HP	kW	lb-ft	N.m	lb/Hp-hr	g/kW-hr	lb/Hp-hr	g/kW-hr
1400	461	344	465	347	1730	2346	0.365	222	0.361	220
1500	488	364	498	371	1711	2320	0.353	215	0.348	212
1600	515	384	515	384	1692	2294	0.341	207	0.343	209
1700	533	398	531	396	1649	2236	0.333	203	0.336	204
1800	550	410	510	380	1605	2176	0.333	203	0.335	204
1900	557	415	-	-	1540	2088	0.340	207	-	-
2000	556	415	-	-	1460	1979	0.342	208	-	-
2100	540	403	-	-	1350	1830	0.347	211	-	-

BRANCHES: AUSTRALIA: NSW: Grafton Ph: (02) 6642 3655 Leeton Ph: (02) 6953 3077 Newcastle Ph: (02) 4964 8466 Penrith Ph: (02) 4729 1313 Queanbeyan Ph: (02) 6297 3433 Scone Ph: (02) 6545 2349 Tamworth Ph: (02) 6765 5455 Wetherill Park Ph: (02) 9616 5300

VIC: Campbellfield Ph: (03) 9357 9200 Dandenong Ph: (03) 9706 8088 Laverton Ph: (03) 9360 0800 Swan Hill Ph: (03) 5033 1511 Wodonga Ph: (02) 6024 3655

QLD: Cairns Cummins Nerco Ph: (07) 4035 2999 Darra Ph: (07) 3375 3277 Emerald Ph: (07) 4982 4022 Mackay Ph: (07) 4955 1222 Townsville Ph: (07) 4774 7733

SA: Adelaide Ph: (08) 8262 5211 Mount Gambier Ph: (08) 8725 6422

WA: Bunbury Ph: (08) 9725 6777 Kalgoorlie Ph: (08) 9021 2588 Karratha Ph: (08) 9144 4646 Perth Ph: (08) 9475 8777

NT: Darwin Ph: (08) 8947 0766

TAS: Devonport Ph: (03) 6424 8800

PAPUA NEW GUINEA: Lae Ph: 675 472 3699 Port Moresby Ph: 675 323 2471

NEW ZEALAND: Auckland Ph: (09) 579 0085 Christchurch Ph: (03) 348 8170 Dunedin Ph: (03) 477 8818 Palmerston North Ph: (06) 356 2209 Bay of Plenty Ph: (07) 345 6699

Website: www.cumminsengine.com.au

