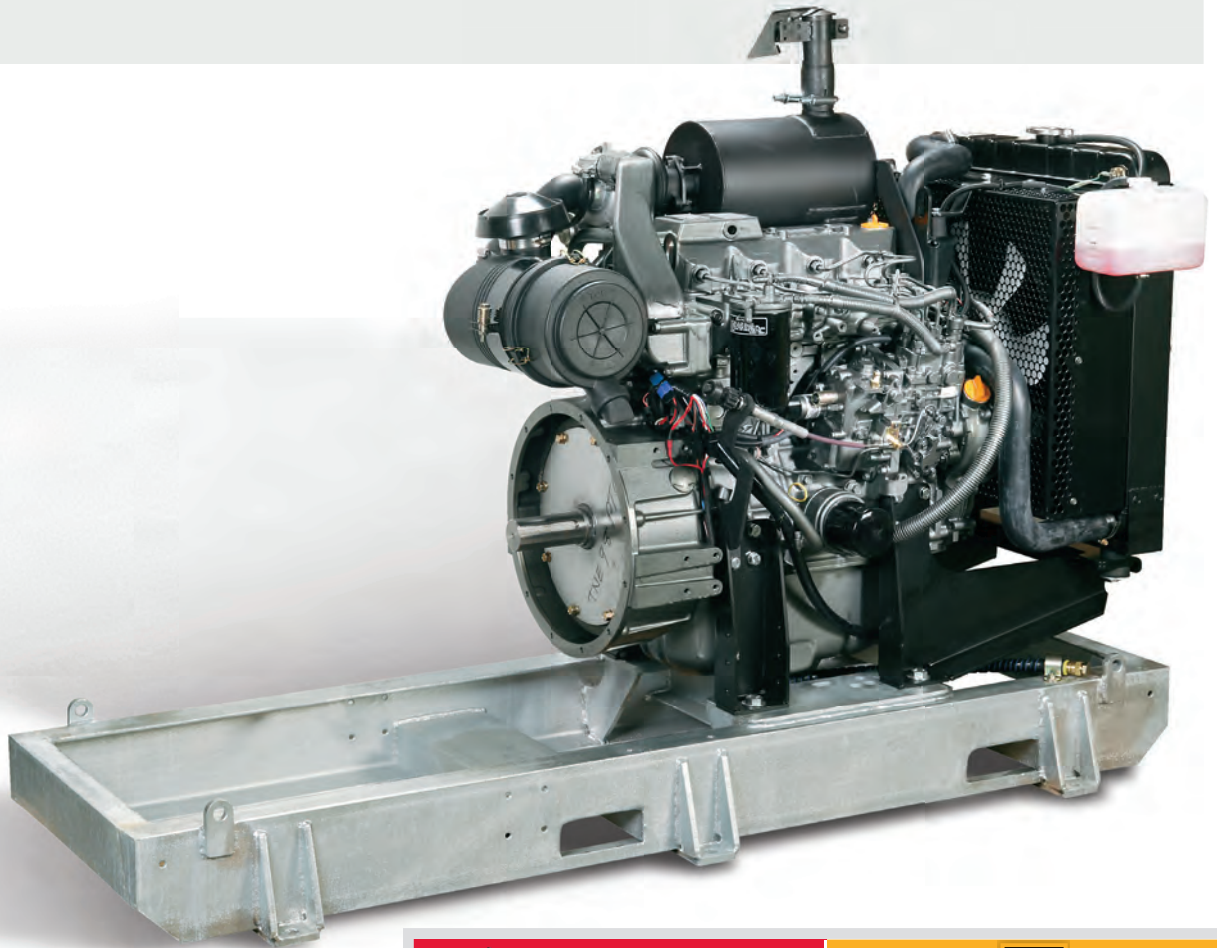
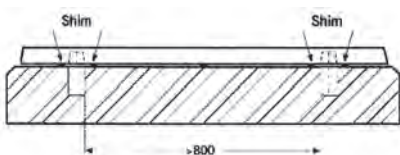


Irrigation Packs



Mounting



Position the pumpset on the foundation and align using a precision spirit level (on the pump discharge nozzle). Always fit shims to left and right of the anchor bolts near the bolts, between the baseplate/foundation frame and the foundation. If the shims are more than 800mm apart, position extra shims an equal distance between them. All shims must be perfectly flush. Uniformly tighten up securing means.



Aligning Pump/Motor

The coupling **MUST** be checked and the pumpset realigned even if the pump and motor are supplied ready mounted on a common baseplate.

Note: Regardless of manufacture, most infield vibration issues are traced back to miss-alignment or the mounting issues.
Take time to get it right in the first place.

 Models Continuous 7.5hp - 75hp	 Models Continuous 74hp - 137hp
2TNV70, 3TNM68, 3TNM72 3TNV70, 3TNV76, 3TNV82A, 3TNV88, 3TNV84T, 4TNV88, 4TNV84T, 4TNV98, 4TNV98T	JCB444IPU-NA (320/50194), JCB444IPU-TC3 (320/50197) JCB444IPU-TC (320/50195) JCB444IPU-TCA1 (320/50200) JCB444IPU-TCA2 (320/50196) JCB444IPU-TCAE-97 (320/50201) JCB444IPU-TCAE-108 (320/50202) JCB444IPU-TCAE-120 (320/50329)
Features	Features
<ul style="list-style-type: none"> • Engine with 45°C rated heavy duty radiator • Sturdy steel base - Galvanised • Variable engine speed controller • Muffler • Air cleaner • Fuel filter and lift pump • EC-150 engine protection kit including low oil pressure, low cooling water level, high cooling water temperature, fan belt breakage and also comes fitted with battery voltage indicator, hour meter, tacho and 99hr timer • Stub shaft • Battery leads • Optional ACP200 auto start controller • Optional pump pressure switches 	<ul style="list-style-type: none"> • Engine with 45°C rated heavy duty radiator • Sturdy steel base - Galvanised • Variable engine speed controller • Muffler • Air cleaner • Fuel filter and lift pump • EC-150 engine protection kit including low oil pressure, low cooling water temperature, high cooling water temperature, fan belt breakage and also comes fitted with battery voltage indicator, hour meter, tacho and 99hr timer • K45 engine protection kit fitted to electronic controlled engines • Battery leads • Optional ACP200 auto start controller • Optional pump pressure switches • Optional Stub Shaft

HP@...RPM (Continuous Rating)



Yanmar TNV Series

ENGINE	Cyl	Cooling	1500	1600	1800	2000	2200	2400	2600	2800	3000	3300	3600	Fuel
2TNV70	2	Water				7.2	8.0	8.8	9.5	10.3	11.0	11.18	12.6	
3TNM68	3	Water	7.4	8.3	8.9	10.0	11.1	12.2	13.3	14.4	15.1	16.5	18.1	n/a
3TNV70	3	Water	8.2	8.9	9.9	10.8	12.0	13.2	14.3	15.4	16.5	17.6	18.9	n/a
3TNM72	3	Water	9.0	9.9	10.6	11.7	12.9	14.1	15.5	16.8	17.9	19.5	21.0	n/a
3TNV76	3	Water	11.0	12.1	13.1	14.3	159.0	17.3	18.7	20.2	21.6	22.3**		n/a
3TNV82A	3	Water	13.3	14.5	16.1	17.6	19.4	21.2	22.9	24.7	26.5			n/a
3TNV88	3	Water	16.5	17.7	19.8	21.8	23.9	26.1	28.4	30.3	32.7			n/a
3TNV84T	3	Water	18.7	19.9	22.2	24.8	27.5	30.2	32.4	35.1	37.3			n/a
4TNV88	4	Water	22.0	24.2	26.3	29.1	32.0	34.8	37.7	40.7	42.7			n/a
4TNV84T	4	Water	25.6	28.4	32.5	33.8	36.9	40.4	43.0	46.6	49.7			n/a
4TNV98	4	Water	41.4	45.2	49.3	50.6	55.1	59.5	61.7*					n/a
4TNV98T	4	Water	50.8	56.2	61.2	61.3	67.1	72.8	75.4*					n/a



JCB IPU Series

ENGINE	Cyl	Cooling	1500	1600	1800	2000	2200	2400	2600	2800	3000	3300	3600	Fuel
JCB444IPU-NA (320/50194)	4	Water	59.1	61.7	68.5	71.1	73.8							
JCB444IPU-TC3 (320/50197)	4	Water	67.1	69.8	72.4	73.8	73.8							
JCB444IPU-TC (320/50195)	4	Water	79.2	80.5	83.2	85.9	85.9							
JCB444IPU-TCA1 (320/50200)	4	Water	83.2	87.2	94.0	96.6	96.6							
JCB444IPU-TCA2 (320/50196)	4	Water	96.6	98.0	103.0	106.0	107.4							
JCB444IPU-TCAE-97 (320/50201)	4	Water	97.3	102.7	160.0	110.0	110.0							
JCB444IPU-TCAE-108 (320/50202)	4	Water	102.0	107.4	112.7	117.4	123.5							
JCB444IPU-TCAE-120 (320/50329)	4	Water	119.5	126.2	132.9	138.2	136.9							

Engine Recommendations

Yanmar Engines: Use Yanmar Branded API CD 30 or 40 weight (subject to ambient temperature) or equivalent.

* Synthetic base lube oil not recommended.
JCB Engines: Use 15W/40 oil or equivalent.

Coolant: Yanmar branded coolant treatment or equivalent as per rated guidelines.

Battery Size: 80Ah(TNV), 1000CCA (JCB)

Engine Warranty (Yanmar)

2 years or 2,000 hours, whichever occurs first as detailed in Yanmar limited warranty statement. (We recommend only Yanmar branded oils & coolants).

Engine Warranty (JCB)

2 years or 4,000 hours, whichever occurs first as detailed in JCB limited warranty statement.

• Battery not supplied

For further details refer to the "Installation and Mounting Instructions" booklet available from Power Equipment.

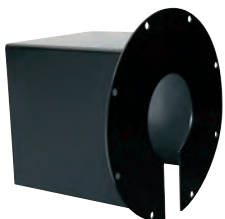
Irrigation Packs Accessories



PUMP MOUNTING PLATE

Pump Mounting Plate Type 1 11 mm
 Pump Mounting Plate Type 1 31 mm
 Pump Mounting Plate Type 1 33 mm
 Pump Mounting Plate Type 1 37 mm
 Pump Mounting Plate Type 1 51 mm
 Pump Mounting Plate Type 1 60 mm
 Pump Mounting Plate Type 1 63 mm
 Pump Mounting Plate Type 1 65 mm

Pump Mounting Plate Type 1 76 mm
 Pump Mounting Plate Type 1 79 mm
 Pump Mounting Plate Type 2 31 mm
 Pump Mounting Plate Type 2 40 mm
 Pump Mounting Plate Type 2 51 mm
 Pump Mounting Plate Type 2 65 mm
 Pump Mounting Plate Type 2 82 mm
 Pump Mounting Plate Type 2 76 mm



COUPLING GUARD

Coupling guard to suit 3,4,5,6 (bolts to flywheel housing)



PUMP PRESSURE TRANSDUCERS

20 BAR (300PSI)

Exclusive and Authorised Australian & NZ Distributor of Yanmar and JCB Diesel engines.