

**DPS**  **PUMPS**

# SELF-PRIMING CENTRIFUGAL PUMP

***FSR Series***



**DPS PUMPS -**

**A Division of Diesel Parts & Service Pty. Ltd. A.C.N. 009 818 848**

**21 Hilda Street**

**Hamilton, Brisbane, Qld. 4007**

**Ph: 07 - 3268 1062**

**Fax: 07 - 3868 1330**

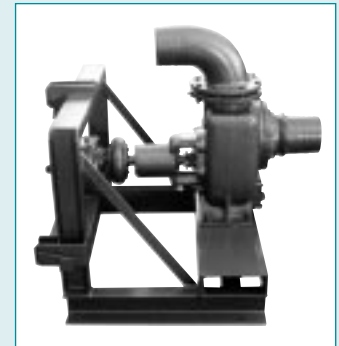
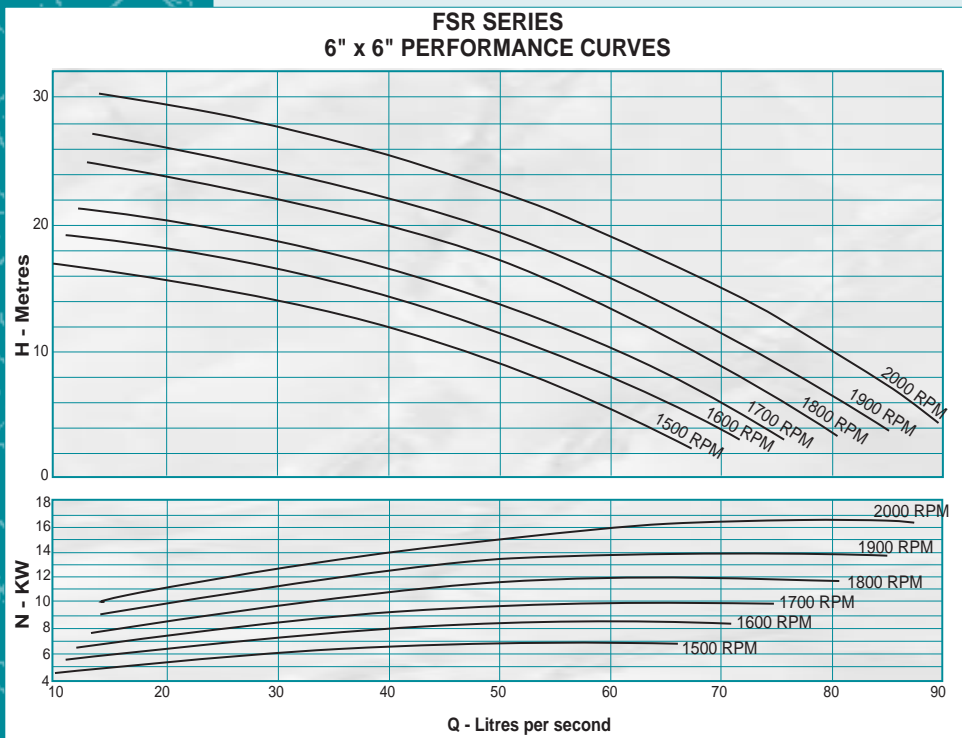
# DPS PUMPS

## SELF PRIMING CENTRIFUGAL PUMP

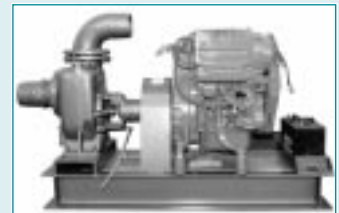
### FSR Series

#### TECHNICAL FEATURES

1. SELF PRIMING. No foot valve needed.
2. MIXED FLOW TYPE IMPELLER
3. SEALED BEARINGS
4. HEAVY DUTY - cast iron construction
5. ROTATION - clockwise
6. OPTIONS: MECHANICAL SEAL  
STAINLESS STEEL SHAFT



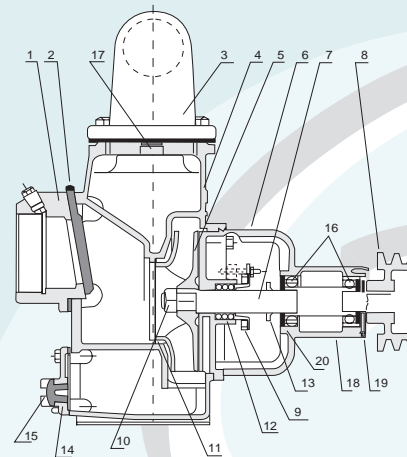
FSR150 3 point linkage P.T.O. unit



FSR150 Engine Set

#### PARTS LIST

No.	PART NAME
1	SUCTION FLANGE
2	CHECK VALVE
3	DISCHARGE FLANGE
4	PUMP CASING
5	IMPELLER
6	BEARING CASING
7	SHAFT
8	PULLEY
9	GLAND
10	IMPELLER NUT
11	WEAR RING
12	GLAND PACKING
13	WATER THROWER
14	DRAIN COVER
15	DRAIN PLUG
16	BEARING
17	PRIMING PLUG
18	OUTSIDE COVER
19	WASHER
20	BEARING END COVER



DISTRIBUTED BY: